

Data Discovery • Data Publishing

The Meta Manager software provides you with the ability to easily enter into the world of information marketing, selection, presentation and discovery while utilizing your existing data definitions.

www.metadatamanager.com

COMPUSULT



Bringing information into focus.

Meta Manager is a toolkit that provides metadata management and end-to-end connectivity with clearinghouses and Open Geospatial Consortium (OGC) clients.

Meta Manager provides a complete solution for creating and defining new and/or mapping existing geospatial metadata definitions and geospatial datasets according to national and international standards. These include the U.S. Federal Geographic Data Committee's (FGDC) Content Standard and support for ISO/TC 211 Metadata Standard (ISO 19115).

Meta Manager Versions

Meta Manager WFS

With Meta Manager WFS, providers of SQL-based geospatial data holdings can map their SQL-based geospatial metadata to a metadata standard and enable access to the database using the OpenGIS Consortium (OGC) Web Feature Service (WFS) Implementation Specification.

The OpenGIS Web Feature Service Implementation Specification proposes interfaces for describing data manipulation operations on geographic features using HTTP as the distributed computing platform. Data manipulation operations include the ability to:

1. Create a new feature instance.
2. Delete a feature instance.
3. Update a feature instance.
4. Get or Query features based on spatial and non-spatial constraints.

Meta Manager Z39.50

With Meta Manager Z39.50, providers of SQL-based geospatial data holdings can map their SQL-based geospatial metadata to a metadata standard and enable access to the database using standard Z39.50 client/server software. The Z39.50 protocol is used by organizations such as FGDC for Clearinghouse connectivity.

Features

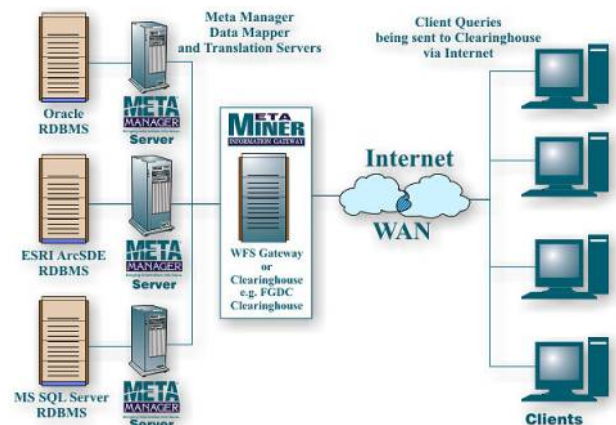
- Easily integrates into existing inventory and metadata databases such as Oracle, ESRI ArcSDE, Microsoft SQL Server and Access databases without requiring modifications or changes to the data structures.
- Allows the creation and population of metadata

standards databases by selecting the metadata standard you require.

- Meta Manager includes administrative and server software and, when interfaced with Web Enterprise Suite component Web Feature Portrayal Service (WFPS), can render relational database content as OGC-enabled maps.
- Meta Manager WFS supports automated ranking of search results that enable users to effectively discover items of interest.
- ODBC driver support provides virtually unlimited connectivity to almost any RDBMS.
- Provides the flexibility to render metadata entries using ASCII, HTML, SGML and XML display formats.
- Enhanced SQL Syntax Checking.
- Comprehensive administrative interfaces provide data administrators with the ability to map and manage metadata in either the UNIX or Windows XP/NT/2000 environments.

Benefits

- Significantly reduces the time and costs involved to implement a national or international metadata standard. Meta Manager can provide an FGDC Clearinghouse-enabled solution in far less time than you thought possible.
- Meta Manager provides a painless solution for implementing metadata standards for a single database or multiple instances across an entire organization.
- The flexibility to dynamically map to the most widely used RDBMSs.





Meta Manager

Meta Manager provides for the search and retrieval of geospatial metadata entries and related geospatial data sets accessible by clients in the Internet environment. It is the first application of its kind to provide fast, efficient utilization of the FGDC Clearinghouse Model within RDBMS environments and now supports the new OGC Web Feature Service.

In the Internet environment, the server component of the software acts primarily as a direct access point to information stored within Oracle®, ESRI ArcSDE®, Microsoft Access® or SQL Server® metadata databases. These databases can then be accessed without changing the internal dictionaries and definitions of the target database.

A Clearinghouse Model

The FGDC Clearinghouse is a good example of a clearinghouse model. It is made up of a decentralized system of servers located on the Internet which contain field-level descriptions of available digital spatial data. The Clearinghouse functions as a detailed catalog service supporting links to this information allowing individual agencies, organizations or geographically defined communities to band together and promote their available digital spatial data. All Clearinghouse servers are considered "peers", permitting direct query by any user on the Internet with minimum transactional processing.

This model can greatly reduce the time, effort and expense in using geographic data. It gives data users ready, reliable data in a consistent form and it provides data producers a reference source, standards, and guidance for creating geographic data. The framework also makes it possible to combine data from many sources and areas.

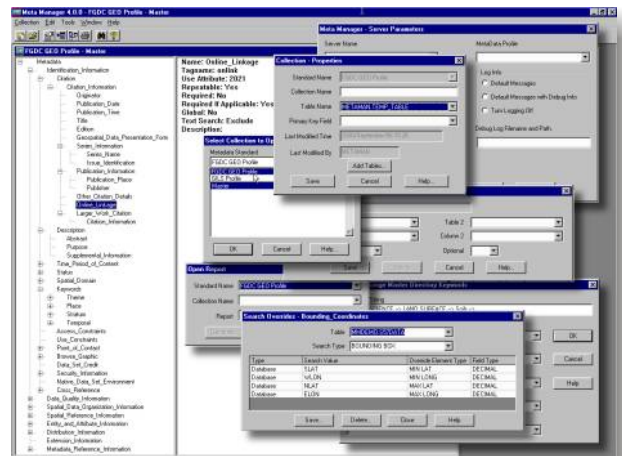
Meta Manager Platforms

There are versions of Meta Manager for many relational databases including; Oracle (UNIX), Oracle (Windows 2000/2003), Sybase, Microsoft SQLServer, Microsoft Access (Windows XP and Windows 2000) or ESRI ArcSDE.

Optional Components

Meta Miner Information Gateway

Now you can easily create your own data clearinghouse using the optional Meta Miner Information Gateway component. It is available as either a Z39.50 client or WFS client that provides intuitive search specification fields, a server registration module and distributed simultaneous server searching. The client look and feel and operation is



fully customizable and supports XML processing.

Supported Hardware/OS

Meta Manager Client and Server supports the following hardware and operating systems:

- SUN UltraSparc® running Solaris 2.5® or higher.
- Compaq Tru64® Unix, DEC OSF.
- Linux.
- SGI Irix 6.4® or higher.
- Intel-based platform running Microsoft Windows 2000® Server or greater.

Meta Manager Administrative Interface supports Intel-based platforms running Microsoft Windows platforms.

Meta Manager is a component of:



Licensing and pricing information for Meta Manager and various options are available upon request.

Meta Manager is a component of CompuSult's Web Enterprise Suite; a suite of Internet-based applications and toolkits that support Web mapping, information cataloging, discovery, retrieval and delivery services.

Meta Manager is also a contributor to the OpenGIS®

Providing
painless
solutions for
implementing
metadata
standards.

Visit our Web Site



Download
Meta Manager 4.0

www.metadatamanager.com

For more information about Meta Manager or any of CompuSult's products or services, call 1-888-307-7707 or visit our Website at: www.compuSult.net



From data warehousing to information publishing. From system integration and networking to speech technology and assistive devices for the visually impaired. CompuSult Limited is a world leader in information management, software development and consulting.